

# Graphic Template 10x10 Inline Exhibit Rectangular Backwall Panels



C1, C2, C5, C6

Final Size: 13" W x 40" H

Bleed Size: 15" W x 42" H

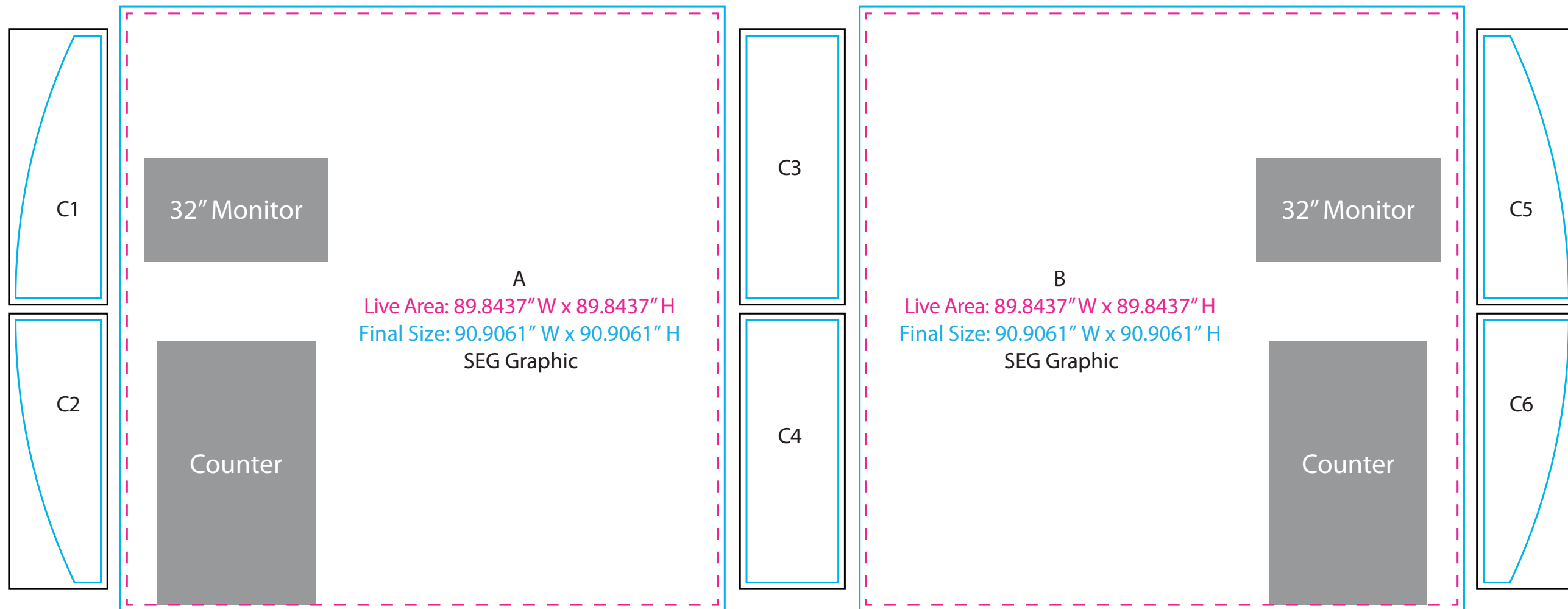
Sintra Graphic

C3, C4

Final Size: 14" W x 40" H

Bleed Size: 16" W x 42" H

Sintra Graphic



NOTE: All Raster Art (jpg, tiff, psd, png, etc.) must be at least 100 dpi at print size.

Standard kits are often customized. Please check with Customer Service to ensure that this template matches your specific job.

# Counter Graphic

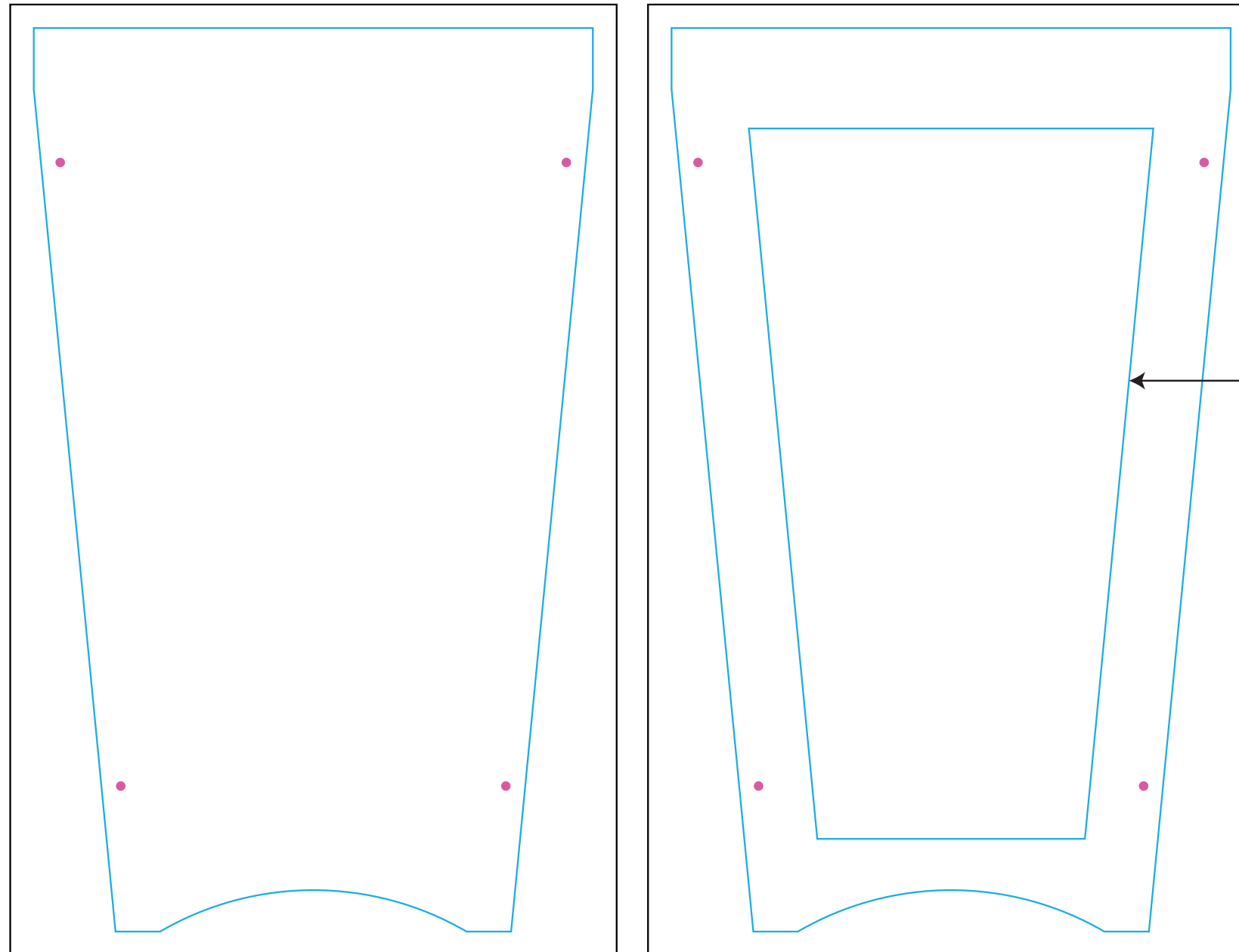
Only one counter version can be used



D1, D2

Final Size: 23.5" W x 38" H

Bleed Size: 25.5" W x 40" H



NOTE: All Raster Art (jpg, tiff,psd, png, etc.) must be at least 100 dpi at print size.  
Standard kits are often customized. Please check with Customer Service to ensure that this template matches your specific job.